



Ezi-SERVO II EtherCAT ALL is stepping motor control system using EtherCAT, high speed ethernet(100Mbps Full-Duplex) based fieldbus. Ezi-SERVOII EtherCAT ALL is EtherCAT slave module which support CAN application layer over EtherCAT (CoE). CiA 402 Drive Profile implemented.

Supported modes are Profile Position Mode, Homing Mode, Cyclic Synchronous Position Mode.

Their main characteristics are :

- Motor + Encoder + Drive + EtherCAT Interface
- CiA 402 Drive Profile Support
- Closed Loop System
- No Gain Tuning
- No Hunting
- Heat Reduction
- Torque Improvement

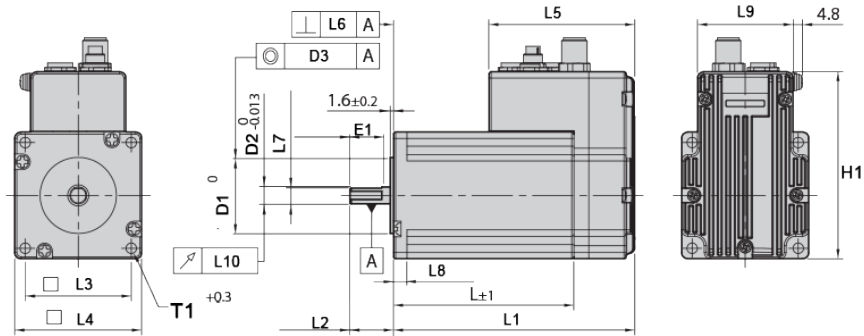


Technical Data

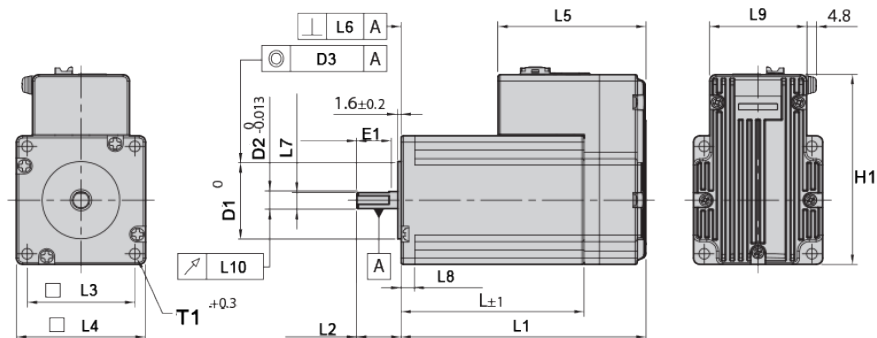
Motor Model	Driver Model	Number of phases	Voltage	Current	Resistance	Inductance	Holding Torque	Rotor Inertia	Weights	Length (L)	Permissible Overhung Load (Distance from end of shaft)			
											3mm	8mm	13mm	18mm
Units		-	VDC	A	Ohm	mH	Nm	g.cm ²	g	mm	N			
Ezi-SERVOII-EC-ALL-42	42M	2	4,32	1,2	3,6	7,2	0,44	54	280	40	22	26	33	46
	42L	2	4,56	1,2	3,8	8,0	0,5	77	350	48	22	26	33	46
	42XL	2	7,2	1,2	6,0	15,6	0,65	114	500	60	22	26	33	46
Ezi-SERVOII-EC-ALL-562	56S	2	1,56	3,0	0,52	1,2	0,64	180	500	46	52	65	85	123
	56M	2	1,62	3,0	0,54	2,0	1,0	280	720	55	52	65	85	123
	56L	2	2,64	3,0	0,88	4,0	1,5	520	1150	80	52	65	85	123
Ezi-SERVOII-EC-ALL-60	60S	2	1,22	4,0	0,33	0,75	0,88	240	600	47	70	87	114	165
	60M	2	1,48	4,0	0,37	1,1	1,28	490	1000	56	70	87	114	165
	60L	2	2,2	4,0	0,55	2,7	2,4	690	1300	85	70	87	114	165
Ezi-SERVOII-EC-ALL-86	86M	2	2,34	6,0	0,39	3,0	4,5	1800	2300	78	270	300	350	400
	86L	2	3,6	6,0	0,6	6,5	8,5	3600	3800	117	270	300	350	400
	86XL	2	4,8	6,0	0,8	8,68	12	5400	5300	155	270	300	350	400

DRAWING

◆ M TYPE



◆ R TYPE



Dimensions	L	L1	L2	L3	L4	L5	L6	L7	L8	L9	L10	H1	D1	D2	D3	E1	T1
56S	46																
56M	55	28,6±1	20±0,5	47,14±0,2	57,15±0,25	68,6	0,1	5,8±0,1	5±0,25	45	0,025	85,5	∅38,1-0,039	∅5,8±0,1	∅0,075	15±0,2	4-∅5-0 THRU
56L	80																
60S	47																
60M	56	28,6±1	20,6±0,5	50±0,25	60±0,5	68,6	0,1	2,75±0,1	6,3±0,25	45	0,025	88,5	∅36-0,039	∅2-7,5±0,1	∅0,075	15±0,2	4-∅5-0 THRU
60L	85																
86M	78																
86S	117	36,6±1	37±1	69,5±0,2	86±0,5	106,6	0,076	2-13-0,1	10±0,5	58	0,05	115	∅14-0,013	∅2-13-0,1	∅0,076	2-25±0,3	4-∅6,5-0 THRU
86XL	155																

PART NUMBER COMPOSITION

Ezi-SERVO II EC-ALL-56L-A-BK-PN05-M-X



- ① Drive Series Type
EC-ALL : EtherCAT ALL
- ② Motor Flange Size
4 2 : 42mm
56 : 56mm
60 : 60mm
86 : 86mm
- ③ Motor Length
S : Small
M : Medium
L : Large
XL : Extra Large
- ④ Encoder Resolution
A : 10,000(ppr)
B : 20,000(ppr)
- ⑤ Brake
Blank : Without Brake
BK : Brake
- ⑥ Reduction Gear Ratio
Blank - Without Gear
PN03 - 1:3
PN05 - 1:5
PN08 - 1:8
PN10 - 1:10
PN15 - 1:15
PN25 - 1:25
PN40 - 1:40
PN50 - 1:50
- ⑦ Connector Type
M : M Connector Type
R : RJ45 Connector Type
- ⑧ User Code

In accordance with our policy of continual product improvement, A2V reserves the right to amend the specification of these products without prior notification